

A NEW AGE IN QUALITY CONTROL

BT60

Bobbins Trolley for Automatic Inspection Systems

THEMA SYSTEM

w w w . t h e m a s y s t e m . c o m

BT60 BOBBINS TROLLEY

This BT60 trolley is designed to be very **light** and **handy**, it is suitable for **DTY and twisted yarn bobbins or similar**, weighting max 6 Kg.

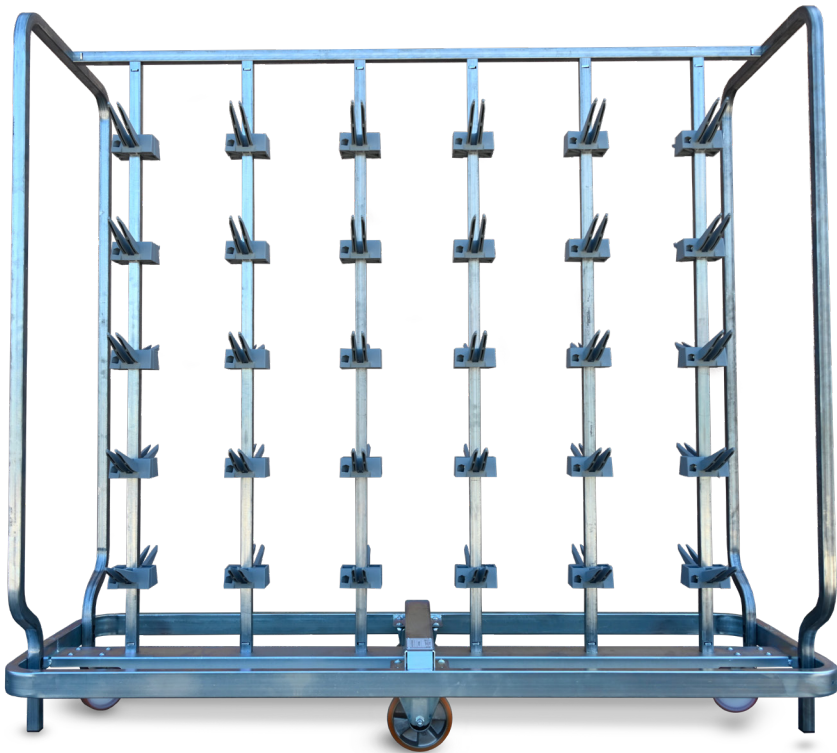
The structure and the pins are designed to work with Thema 2 **automatic inspection systems**.

The trolley is delivered as loose items and can be **self mountend** at the Customer plant, to **optimize space** and so reduce the shipment costs.

The dimensions and layout can be personalized depending on the Customer needs.

Specifications	
Weight	78 Kg
Trolley dimensions L x H x P	1990 x 700 x 1760 mm
Shipment volume	1990 x 700 x 400 mm
N. of positions *	60
Pins angle	12°
Nominal weight on pin	6 Kg (+ max 20 Kg accidental overload)

* adaptable to Customer needs and variations upon request



Side frames

6. Insert the end caps at the base of the side frame.

7. Fit the upper part of the side frame into the upright, using the corresponding bolt (7.1) and locking nut (7.2).
Use Loctite threadlocker, code 243, medium strength.
Tightening torque: 22 Nm

8. Assemble the lower part of the side frame using the corresponding bolt (8.1) and nut (8.2).
Use Loctite threadlocker, code 243, medium strength.
Tightening torque: 22 Nm

9. Install the bumper (9.2) at the base using the corresponding bolt (9.1).
Tightening torque: 22 Nm

Repeat the above steps for the second side frame.

Assembly manual

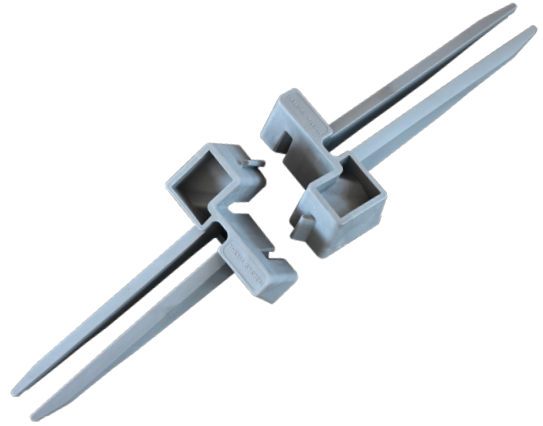
18

ASSEMBLY MANUAL

An assembly manual is provided with step by step instructions.

PINS

Made of two self positioning parts and one single screw locking design.



WHEELS

Two wheels diameters, allowing a tilting movement to facilitate the trolley handling.



ALIGNMENT DEVICES

Specifically designed to help the mounting procedure and assure the trolley alignment.



BT60



 **THEMA SYSTEM**
www.themasystem.com

THEMA 2 S.r.l. - Headquarter & workshop:
Via G.Puccini, 2/4 - 46024 Moglia (MN) Italy - Tel. +39 0376 556400
C.F. e P.IVA (VAT): 02300850209 - SDI: 2LCMINU
thema@themasystem.com
thema2@pec.it



Made in Italy



IGH
Irico Gualchierani Handling